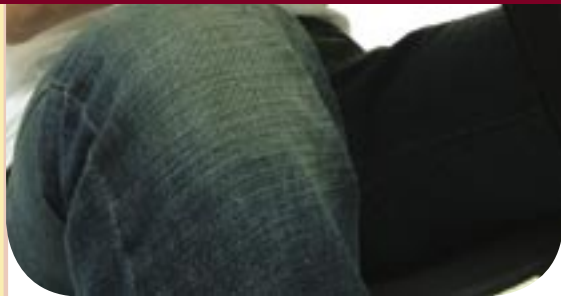




STUDENTS' CODE OF COMMITMENT



Awarded for excellence





introduction

Students who enrol on courses with Aberdeen College are entering into a partnership with the College to further their education and training. A partnership involves both sides in rights and responsibilities. What Aberdeen College undertakes to do for you is set out in the Clients' Charter, copies of which are available from the College Information Centre.

- This code sets out what Aberdeen College expects from you in return.

good behaviour

Students are expected at all times and in all dealings with staff and fellow students to behave with care and consideration. The College's expectations of students in respect of behaviour relating to specific issues are outlined below.

race relations & equal opportunities

Aberdeen College is committed to promoting equality of opportunity for all its students and staff in all aspects of College life to ensure that no one is discriminated against on the grounds of race, colour, religion, sex, marital status, disability, age, social position or sexual orientation.

In becoming a member of the College community, students are expected to observe and adhere to the College's Equal Opportunities Policy and Code of Practice.



learning and study

Students are expected to take full advantage of the opportunities for learning and study by:

- Regular attendance at classes, tutorials, practical work, and work placements
- Active participation in class and group activities
- Punctual completion of course work and assessments
- Ensuring that work submitted is the individual work of the student except where group submissions are part of an assessment
- Maintaining a standard of behaviour during teaching sessions which allows all class members to take part in, and benefit from, all learning opportunities
- Informing teaching departments and tutors at the earliest opportunity of any disability, illness or other circumstance which may affect attendance or assessment performance
- Using the opportunities offered to seek advice and guidance whether of an academic or personal nature, during a course of study
- Co-operating with fellow students and members of staff in the development of an environment of partnership and understanding
- Contributing to the improvement of course content and presentation through co-operating in the completion of student course evaluation forms
- Communicating suggestions for the improvement of courses through student representatives on course committees, staff-student consultative committees and committees for the Board of Management.

health & safety

Students are expected to contribute to the promotion of a safe environment in which to work, learn and study by:

- Taking time to observe fire and other emergency evacuation directions and emergency exits
- Employing safe working practices at all times
- Observing specific Health and Safety Regulations in workshops and laboratories
- Being familiar with first aid and other health care provision within College centres.

the environment

Students are expected to contribute to the maintenance of a suitable physical learning environment by:

- Treating College buildings and their decoration with care and avoiding deliberate damage or defacement
- Treating classrooms and furnishings as part of their shared working environment - shared with other groups of students and with staff
- Using dining and common room areas with respect.

In the interest of your health and safety, Aberdeen College operates a No Smoking Policy.

students' code of commitment

